

# REFLECTOR™ Enhancer

## Color Chart



Brass



Bubblegum



Cario



Canary



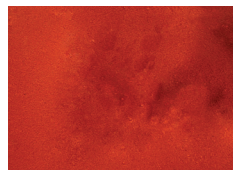
Charcoal



Coffee



Concord Grape



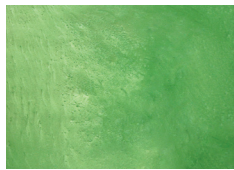
Copper



Dark Green



Elite Crete Blue



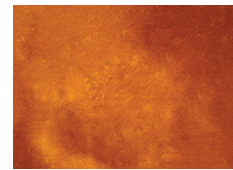
Green Apple



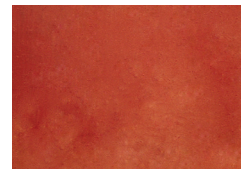
Gunmetal



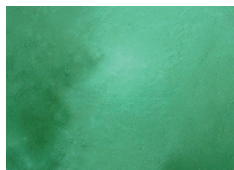
Lilac



Orange Gold



Red Yellow



Rialto



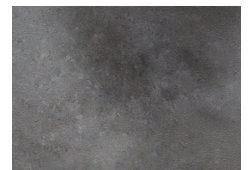
Russet



Sherbet



Sky Blue



Titanium

**Note:** The colors on this chart are represented as closely as possible. Variations should be expected due to differences in; substrate condition thickness of application, speed of curing, blending of colors, application method and color of initial primer coat. For additional information, see all related Product Information and Technical Data sheets located at [elitecrete.com](http://elitecrete.com).

**elite crete systems**

ENGINEERED HIGH PERFORMANCE SURFACES & FLOORING



## REFLECTOR™ Enhancer Flooring Systems

are specialty, high build, self-leveling, fluid-applied floor coatings. Engineered for residential and commercial applications where a durable, long-lasting, aesthetically unique, easy to maintain and completely custom floor is required.

### TYPICAL AREAS OF USE

- Retail stores
- Shopping malls
- Automobile showrooms
- Restaurants & Bars
- Hotels & casinos
- Art galleries & museums
- Collegiate & professional sports complexes

### ADVANTAGES

- Ease of maintenance
- Aesthetic improvements
- Hard and abrasion resistant
- VOC free - CA 01350 air quality compliant
- Stain and chemical resistant
- Antimicrobial
- Satin or gloss finish
- Fast set available for quicker turnaround time
- Special colors can match design or preferred colors

*Due to the unique and unrepeatable nature of these flooring systems, consult with a technical representative before installing or specifying.*

*For additional information, visit: [elitecrete.com](http://elitecrete.com)*



### Elite Crete Systems, Inc.

1151 Transport Drive  
Valparaiso, Indiana 46383

Phone: +1.219.465.7671  
Toll Free: 888-323-4445  
Email: [info@elitecrete.com](mailto:info@elitecrete.com)  
[elitecrete.com](http://elitecrete.com)

The information herein is general information to assist our customers in determining whether our products are suitable for their specific applications. Our products are intended for sale to commercial and industrial customers. We require that customers should inspect and test our products before use to satisfy themselves as to the content and suitability for the applications they intend to use our products for. Nothing herein shall constitute any warranty expressed or implied, including any warranty of merchantability or fitness for a particular purpose, nor is replacement of our materials and in no event shall we be liable for incidental or consequential damages.