

elite crete systems

Engineered High Performance Surfaces & Flooring



COMMERCIAL FLOORING SOLUTIONS

Resinous and cementitious coatings for
commercial, retail and public concrete surfaces

CSI Divisions 03 & 09



COMMERCIAL FLOORING SOLUTIONS

elite crete systems
Engineered High Performance Surfaces & Flooring

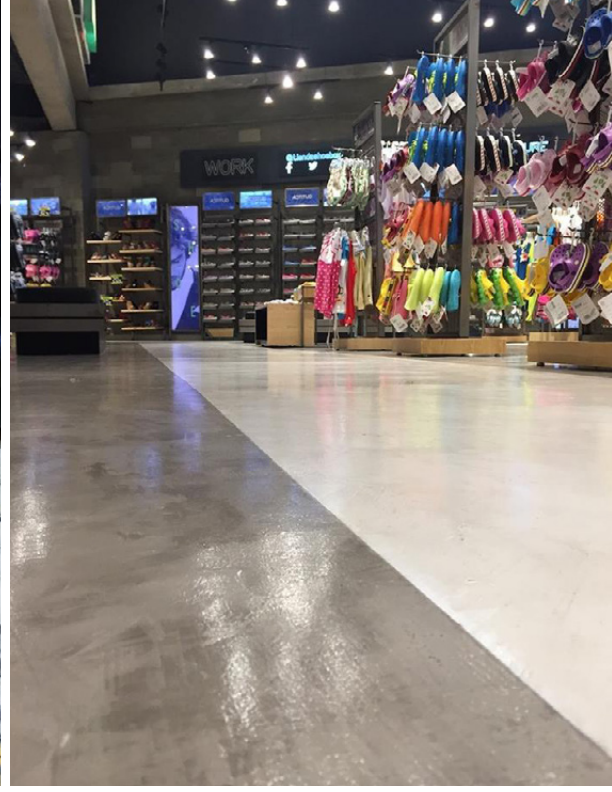


QUICK INSTALL
SHORT DOWNTIME

COST EFFECTIVE
EASY TO CLEAN & MAINTAIN

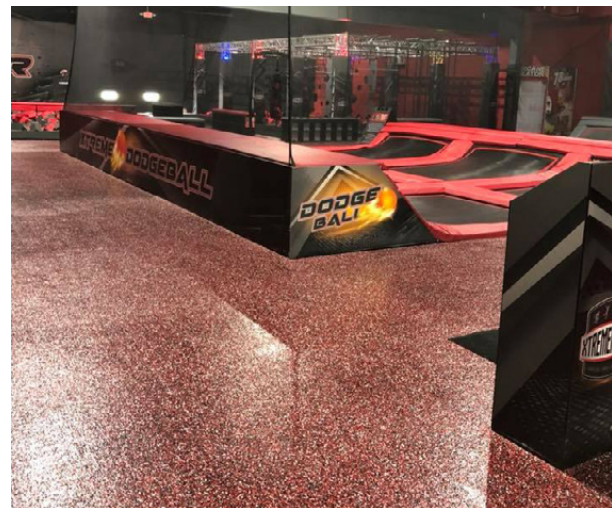
Our custom flooring solutions for commercial and retail spaces offer endless design options to meet your aesthetic requirements and durability needs.

- ✓ RETAIL STORES
- ✓ RESTAURANTS
- ✓ OFFICES & HOTELS
- ✓ EDUCATIONAL FACILITIES
- ✓ PARKS & PUBLIC SPACES



VIRTUALLY ENDLESS CUSTOMIZATION OPTIONS TO MATCH YOUR BRAND IDENTITY

Specialty commercial flooring solutions offer unlimited colors, designs, patterns and textures that can be customized to meet individual business and property needs. These seamless surfaces are fluid-applied in place and can be installed with minimal downtime.



Not only can these flooring systems match your brand's color scheme, the surfaces can also be designed to incorporate your company's logo.





Find us on:

- Speclink
- Dodge
- Architizer
- Buyer's Guide
- Ron Blank & Assoc.
- 4Specs
- AEC Daily
- AECinfo
- Sweets
- ARCAT

 elitecretesystems

 @elitecretesystems

 @elitecrete

Elite Crete Systems

Email info@elitecrete.com

Phone +1-219-465-7671

Toll Free 888-323-4445

www.elitecrete.com

elite crete systems

Engineered High Performance Surfaces & Flooring

CUSTOM COMMERCIAL FLOORING BENEFITS

- ✓ DURABLE & LONG LASTING
- ✓ EASY TO MAINTAIN
- ✓ ANTI-SLIP
- ✓ SUITABLE FOR HIGH TRAFFIC
- ✓ CHEMICAL & STAIN RESISTANT
- ✓ MULTIPLE FINISHES AVAILABLE
- ✓ FOR NEW OR EXISTING FLOORS
- ✓ FDA, USDA, CIFA ACCEPTABLE

For more technical documentation and specifications, visit our website at www.elitecrete.com/technical-data